



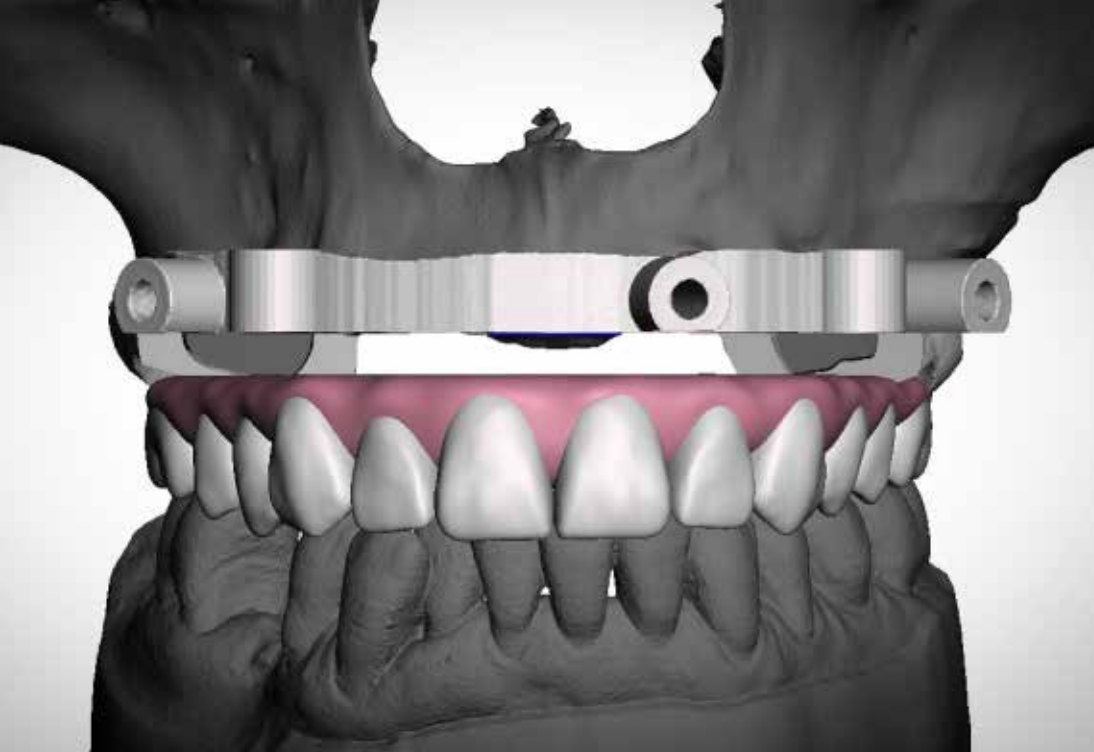
Digital Precision is pleased to announce our now fully active, Licensing Agreement with IBUR Systems. This agreement grants Digital Precision the use of all the patents listed below for the Stackable Bone and Tissue Supported Guided Systems. We are very excited about this partnership and look forward to implementing all our expertise and experience, in order to provide you and your patients with the most precise, aesthetic and productive way of doing your Implant Guided Surgery, Immediate load and Final Prosthetic cases.....

- Here are the patents and pending applications related to stackable guides:
 - Patent No.: US9,504,533 B2 B2 Edentulous surgical guide (the provisional application filed: 9/16/2011, Utility application filed: 9/15/2012)
 - The claims covers Mucosa & Bone-bone Stackable Surgical Drill Guides.
 - Continuation Application No.: 15/359,167 Edentulous surgical guide (filed 11/22/16 - Patent has been granted and will be issued soon)
 - Continuation application of US9,504,533 - The claims are strictly based on the specification of the US9,504,533 B2, which cover other types of stackable surgical guide that were not covered by the above patent (bone-borne surgical guides and mucosa-borne surgical guides)
- We have additional continuation applications based on this IP.

Fill out your digital Rx, upload your Digital scans, Dicoms and Anything else Digitally at:

www.3dprecisiondigital.com

or Contact Us at 800-574-0721



3DP Guided Surgery, Immediate Load & Implant Restorative Options

Patented and Licensed Stackable Bone and Tissue Guides



www.3dprecisiondigital.com

800-574-0721



Guided Prosthetics - Scan to Definitive, per Arch

Item	Description	Retail Price
CT Surgical Guide & Bone Foundation Guide (includes Printed Model)	Virtual 3D planning (powered by 3DP. Surgical Guide & Bone Foundation All on 4/5/6	\$2250
CT Immediate Provisional	Screw retained PMMA prosthesis, parts not included.	\$ 650

Please note that fees do not include implant parts: analogs, temporary abutments, final screws or multi unit abutments.

CT Surgical Guide w/ Provisional: INCLUDES:

Printed validation model, Surgical Guide with drill sleeves, Bone Foundation Guide, Tripod Index, Clear Bridge, Gaskets/Bite, Dry model surgery, Finished provisional bridge, Implant parts for provisional not included.

\$2750



UPLOAD YOUR FILES AND DIGITAL RX AT:

www.3dprecisiondigital.com

Zurick Bridge Zr
\$6250



Zirconium substructure with individual crown preps and individual e.max crowns. Gingival can be pressed e.max ceramic or composite.

Prettau Bridge
\$5500



Full contour Prettau zirconia with porcelain layered in the aesthetic zone. Gingival and non functional areas are solid zirconia.

Zurick Bridge Ti
\$5500



Titanium substructure with individual crown preps that are opaqued and individual e.max crowns. Gingival architecture is composite.

Pekkton® Bridge
\$4900

BDT Technique



To meet the demanding biomechanical criteria of prosthetic solutions ask for Pekkton® (PEKK): This high performance polymer serves as a implant substructure and supports implants and individual e.max crowns.

Montreal Bar
\$3000



Hybrid option that includes: Titanium bar wrapped with acrylic and finished with nano hybrid Phonares II denture teeth.

Montreal Bar-Overdenture
\$2500



Titanium milled bar with tapped and screwed locators, custom designed to support a Precision over-denture.
*Recommendation is that a metal framework be designed inside the over-denture for maximum strength and support. Additional \$150 for metal framework

**Please note that fees do not include implant parts:
Multi-unit abutments or Cad/Cam abutments.
Everything else is included in fee.**



SOLID MONOLITHIC ZIRCONIA, PRETTAU STYLE NOW:

\$4900

3DP Guided Surgery, Immediate Load & Final Prosthetics

3DP Precision Guided Prosthetics Option #1 - \$2750

- Includes the following:

- Pin Start Guide
- Bone Base Frame
- Surgical Stackable Guide
- Gasket and Jig Transfer
- Printed Bone and Reduced Bone
- PMMA Immediate Load Provisional
- Final Multi Unit Abutments and Temp Cylinders not Included



3DP Precision Guided Prosthetics Option #2- \$5900

- Includes the following:

- All Items in Option #1
- Final Montreal Hybrid (Authentic Ti Bar, Acrylic and Denture Teeth)
- Verification jig, Occlusal Rim, Tooth Set up and Try In
- Multi Unit Abutments and Temp Cylinders not Included



3DP Precision Guided Prosthetics Option #3- \$6995

- Includes the following:

- All Items in Option #1
- Final Precision zirconia Zurick Bridge with porcelain facials and Pink Porcelain
- Verification jig, Occlusal Rim, Tooth Set up and Try In
- Multi Unit Abutments and Temp Cylinders not Included



3DP Precision Guided Prosthetics Option #4- \$7995

- Includes the following:

- All Items in Option #1
- Final Precision Zurick Bridge with Zirconia or Titanium substructure and Individual E.max or Zirconia Crowns and Simulated Tissue or Pekkton Bridge as final
- Verification jig, Occlusal Rim, Tooth Set up and Try In
- Multi Unit Abutments and Temp Cylinders Not Included

