



PRECISION
DENTAL ARTS

Implant Restorative Guide: Patient Edition





PRECISION

DENTAL ARTS

We are most fortunate at Precision Dental Arts to be working with some of the best doctors across the country. With over 30 years of experience restoring dental implants, Precision has evolved into one of the most sought after implant restorative labs in the country.

Our work has been published in national and international journals as well as on the Discovery Channel's Cosmetic surgery; The Cutting Edge and Extreme Makeovers. From simple tooth implant restorations to full mouth multi-implant cases, as important as those high profile cases may be we put the same energy and effort into every case we make.

Our goal is to provide the highest quality work with a friendly and personal service. We take the extra step, go the extra mile, with each case no matter how small or big the case might be. We consider how each case will lead to a successful restoration, prosthesis and the patients comfort. Each case represents a person and we take personal care and interest with every person.

Precision Dental Arts is dedicated to serving the dental profession with the latest in technology, the advanced level of expertise of our technicians through their artistry, education and the highest quality of materials available to produce the highest quality restorations for our clients and their patients.

www.precision-dental-arts.com



Please note that all implant prosthesis can be fabricated for all implant brands and platforms. Metal or zirconia design of bar or substructure may be customized at no additional charge.



ALL PHOTOS SHOWN IN THIS BROCHURE
ARE ACTUAL CASES FABRICATED BY:



PRECISION
DENTAL ARTS



Implant Supported Fixed and Removable Options-
Listed below are some of the many implant options from Precision.

Zurick Bridge with Individual Emax Crowns



Zurick Bridge with Individual Emax Crowns-

With the combination of a one piece zirconia substructure coupled with individually waxed and pressed e.max crowns and pressed e.max gingival ceramic, this all ceramic, fixed implant solution combines the ultimate in strength and aesthetics. Over the past couple years this has been one of our most successful fixed implant prostheses.



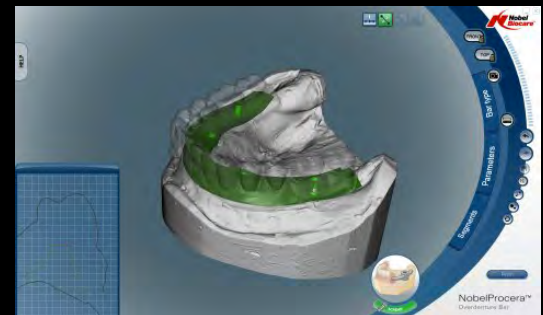
Zurick Bridge Prettau- Monolithic Zirconia w/ Porcelain



Zurick Bridge Prettau- Monolithic Zirconia w/ Porcelain Facials-

This fixed restorative option is quickly becoming the standard for fixed implant prosthesis. Combining full contour monolithic Prettau zirconia and hand-stacked facial porcelain, allows for a zirconia occlusal and the facial aesthetics of e.max layered ceramic. This prosthesis is excellent when limited inter-occlusal room or bruxism is present.

Montreal Bar- Fixed Hybrid



Montreal Bar- Fixed Hybrid- Precision Dental Arts is pleased to introduce our recently published Montreal Hybrid. This hybrid is a screw retained, fixed prosthesis. Precision fabricates a custom Cad/Cam titanium solution within the matrix of a hybrid set up, that exhibits the highest standards of quality. All hybrids are designed by our team of technicians who have over 30 years of implant experience. Following fabrication of the milled bar the hybrid set up is then transferred to the titanium bar and is ready for a final try in. Following the verification of the try in the Montreal Bar is then processed and finished with the utmost care and precision. This streamlined prosthesis is a mist for the edentulous patient that is in need of a fixed, maintainable and esthetic result.

Montreal Bar- Free Shape Bar w/ Locators



Montreal Bar- Free Shape Bar w/ Locators

The ultimate in fixed/removable restorative prosthesis. This Precision milled titanium bar coupled with tapped and screwed Zest locator attachments provides a precision fit and superior aesthetics. A custom premium denture is then fabricated to perfectly fix onto the milled titanium bar via precision attachments processed inside the denture. Advantages include increased biting force and superior fit to traditional locator attachments.

FOR ADDITIONAL INFORMATION ABOUT THE DESIGN FOR THESE TYPES OF CASES PLEASE CONTACT US AT 800-574-0721 AND ASK FOR JORDAN LOTT OR VISIT US AT,

www.precision-dental-arts.com

TO LEARN MORE ABOUT OUR IMPLANT RESTORATIVE OPTIONS AND PUBLISHED WORK.

PLEASE NOTE THAT WE HAVE MULTIPLE DESIGN CAPABILITIES FOR THESE TYPES OF CASE. FROM ZIRCONIA OR MILLED TITANIUM TO CAST METAL SUBSTRUCTURES STACKED WITH PORCELAIN OR INDIVIDUAL CROWNS. THE ABILITY TO CREATE A PRECISION SPECIFIC IMPLANT PROSTHESIS HAS MANY POSSIBILITIES. PLEASE NOTE THAT ACCURATE AND WELL TREATMENT PLANNED CASES ARE CRITICAL TO THE DESIGN AND SUCCESS OF SUCH CASES.



PRECISION
DENTAL ARTS



Appointment Schedule

Implant or Abutment Level Restoration

First Appointment

-Implant Level Impressions

Remove the healing abutments from the implants

Seat the implant level impression copings and tighten guide pins.

Take an implant or abutment level impression, including the palate and vestibules, using a stock or custom tray.

Once set, loosen the guide pins and pull the impression.

Seat abutment healing caps.

Take an impression of opposing dentition as well as the denture to be replaced.

Send in the impressions with your lab rx



Second Appointment

-Jaw Relation Records, Verification Jig and Shade Selection

To ensure a passive fit of your custom-milled framework, it is vital to get an accurate final impression. You will receive a bite block and verification jig. The following procedures should be followed to ensure an accurate impression.

Jaw Relation Records

Remove abutment healing caps. Seat the bite block on the implants and tighten the cylinder screws.

With the patient sitting up, use conventional denture technique to achieve accurate jaw relation records.



- a) For maxillary cases, shape the rim for lip contour- place a small amount of vaseline on the labial aspect of the wax rim and confirm.
- b) With the patient facing toward you, mark the midline, high lip line and corners of the mouth in the wax rim.
- c) Determine centric relation and (record passively) vertical dimension of occlusion (VDO).

Note: The patients existing denture should be evaluated and can be utilized as a benchmark in determining new VDO.



- i) Place a dot with indelible marker on the tip of the patients nose and chin.
- ii) Have the patient lick their lips, swallow, then relax their jaw. Measure the distance between the two dots. Repeat this procedure 3-4 times until you obtain a consistent vertical dimension of rest measurement. (VDR)
- iii) Have the patient bite together gently. The measurement should be approximately 3mm less vertical measurement at rest. Adjust the rims, if necessary, so they meet evenly.
- iv) There should be 2-4 mm speaking space between the rims when the patient pronounces "s" sounds (e.g., Mississippi, sixty, sixty-one, etc.).

Remove the bite blocks.

Reseat and tighten the healing caps.

Verification Jig

Remove healing abutments

Seat lab fabricated verification jig on the implants using all the guide pins.

Very Important- Place the verification jig on the implants. Tighten one single guide pin into one of the distal abutments. No lifting of the jig should occur. Check for a passive fit by visually inspecting completely around each cylinder for complete seating. Repeat this process for each implant.

- a) If any section has a cylinder-abutment that is sub-gingival , a periapical radiograph must be taken to verify seating.

If there is a slight rock or issue with seating of the jig- section the jig and then lute the jig back together thus removing the rock in the jig.

Lute the sections together with a suitable material (e.g., Triad Dualine-Dentsply, Zapit.

- a) allow the material to flow through, and completely around, the gaps.
- b) Ensure the material is completely cured.



Loosen and remove all guide pins. Remove jig as one unit for visible inspection

Shade Selection

Select final ceramic shade and shape of teeth. The study model of the patients existing denture can be used as a reference regarding the size and shape of the new teeth.

Return case to Precision Dental Arts enclosing: verification jig, bite blocks and all components, models.

Third Appointment Set Up Try In

You will receive from Precision Dental Arts a denture set up for try in with temporary cylinders.

Remove abutment healing caps

Seat the denture set up and tighten the the prosthetic screws

Evaluate CR, VDO, occlusion, esthetics/shade, tooth arrangement, and phonetics including “f” and “s” sounds as well as the midline. Change the set up if necessary or note the requested changes on the lab rx. If CR is incorrect, a new bite registration should be taken.

Please take photos and email them to Precision Dental Arts. pda@srv.net

Remove the denture set up and replace the healing caps.

Return the case to Precision Dental Arts



Fourth Appointment -Delivery of Final Prosthesis

You will receive from Precision Dental Arts the final Zurick Bridge prosthesis

Remove abutment healing caps

Hand tighten the prosthetic screws to the appropriate torque. Wait approximately 5 mins and resource the screws.

Cement Final restorations onto the zirconia substructure

Check occlusion. Make adjustments as necessary after all the crowns are bonded into place.



Appointment Schedule

Implant or Abutment Level Restoration

Quick Reference

Doctor

Precision

1st Appointment

Take implant level impressions and opposing dentition impressions as well as an impression of denture to be replaced.

Pour models: fabricate bite block and verification jig.
5 days

2nd Appointment

Obtain jaw records, select denture tooth shade and mould. Seat verification jig, one screw test, resection jig if needed.

Articulate master casts, set denture teeth in wax. Return for try-in.
5 days

3rd Appointment

Denture set-up try in and photos

Fabricate zirconia or Ti framework, press ceramic gingiva and finish final crowns or case
15 days

4th Appointment

Final delivery of prosthesis

One Week Post-Delivery Check

Check occlusion



PRECISION
DENTAL ARTS

800-574-0721

www.precision-dental-arts.com



PRECISION
DENTAL ARTS



PRECISION
DENTAL ARTS

The Lab That Makes The Difference

www.precision-dental-arts.com
800-574-0721